

# Trykvent

Recessed clip-fix slot ventilator



Trykvent Ventilator

Suitable for:



**The Trykvent is an unobtrusive semi-recessed plastic ventilator that fits over a 16mm slot in a timber window.**

The Trykvent is specifically designed for high performance timber windows and is ideal for both new build or refurbished situations. It is available in white, brown or grey.

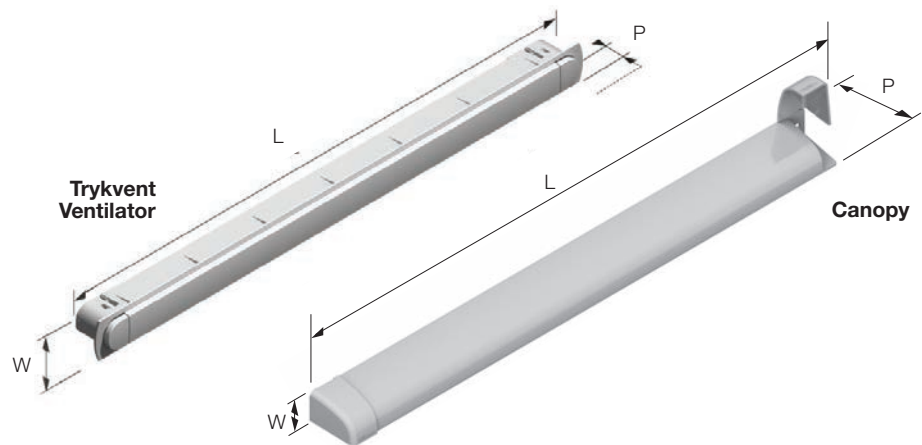
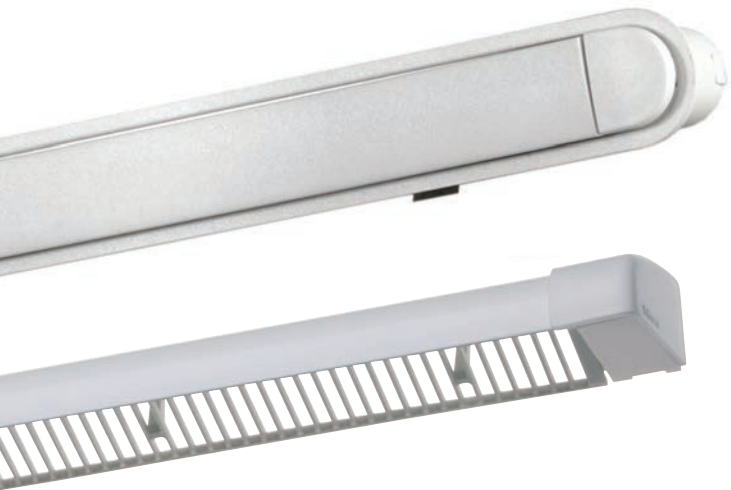
When fitted correctly, the Trykvent seals extremely well when closed, while offering a higher EA than most other similar vents available.



HF Canopy

## Features and Benefits

- Specifically designed for high performance timber windows
- Press to open and close principle
- High airtightness in closed position
- Thermal insulation all plastic with gas injection moulded T-bar
- Gasket seal between T-bar and channel
- Unique auto drop down opening
- High quality, robust operating mechanism
- Unobtrusive low profile design
- Latching mechanism in closed position
- High airflow or 4300mm<sup>2</sup> free area
- GF Polyester



# Details

| Product       | Product Code | (L) Length | (W) Width | (P) Projection Closed-Open | EA (mm <sup>2</sup> ) | Free Area (mm <sup>2</sup> ) | Slot Detail / Free Area of Slot (mm <sup>2</sup> ) |
|---------------|--------------|------------|-----------|----------------------------|-----------------------|------------------------------|--|
| Trykvent 389  | TA7701       | 389        | 27        | 6.2 - 19                   | 4300                  | 4800                         | 151 10 151 16*                                     |
| HF 441 Canopy | TA6054       | 441        | 24        | 36.5                       |                       | 6763                         |  |
| Trykvent 283  | TA7702       | 283        | 27        | 6.2 - 19                   | 3000                  | 3616                         | 226 16**   |
| HF 303 Canopy | TA6057       | 303        | 24        | 36.5                       |                       | 4458                         |  |

\* Slot detail should also include a 386 x 23 x 22 recess for the ventilator.

\*\* Slot detail should also include a 280 x 23 x 22 recess for the ventilator.

## Manufactured from

Ventilator: Glass filled PBT & POM

Canopy: Aluminium 6063 HIT T6 & PP (UV Stable)

## Standards

Tested in accordance with BS EN 13141-1:2004 (airflow, air leakage and weather tightness)

## Performance

(Full test details available on request)

Equivalent Area – See above

Free Area – See above

Air Leakage – 0.40m<sup>3</sup>/hr @ 50 Pascal

Water Resistance – No test data available

## Finish

Suffix product code with:

-392 (white), -315 (brown), -464 (grey) matches

RAL9006